

# Professional Van Racking

## Ford

**Transit Courier**  
**Transit Connect**  
**Transit Custom**  
**Transit**



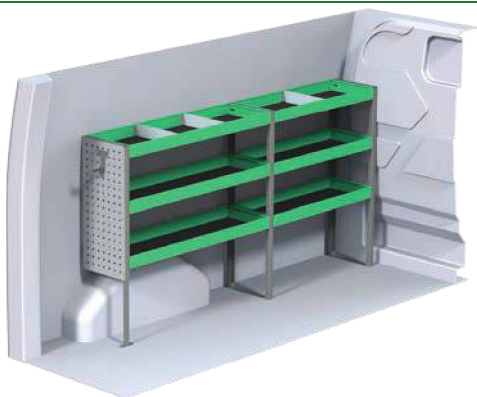
**A place for everything.**

[www.systemedstrom.com](http://www.systemedstrom.com)

# Ford Transit Custom

## 2933 mm wheel base

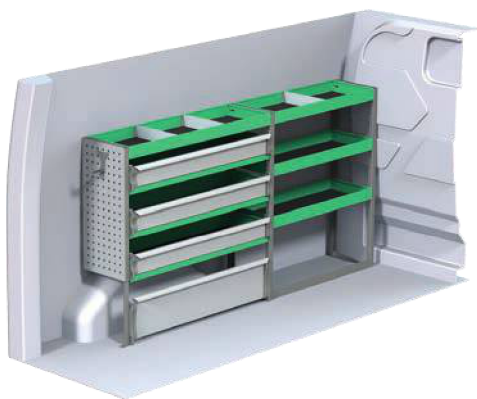
Recommended retail prices valid from 2015-07-01 until further notice. Mounting and VAT is excluded.  
Suggested hours is the recommended mounting time for experienced retailers.



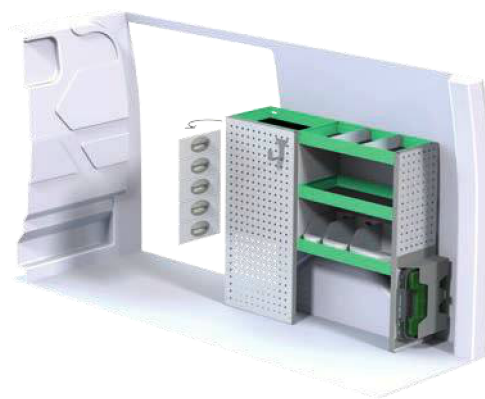
Art.No	LxDxH	Kg	Hr.	€
F40700	1878x300x1000 mm	35	3,0	



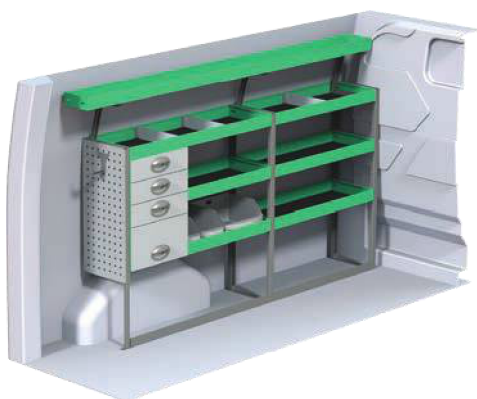
Art.No	LxDxH	Kg	Hr.	€
F40701	1108x300x1000 mm	41	2,6	



Art.No	LxDxH	Kg	Hr.	€
F40702	1878x300x1000 mm	48	3,7	



Art.No	LxDxH	Kg	Hr.	€
F40703	1197x300x1000 mm	46	3,0	



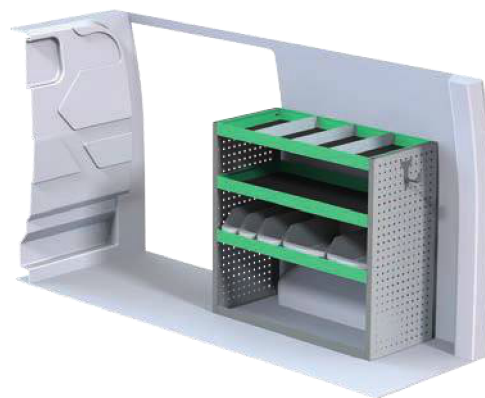
Art.No	LxDxH	Kg	Hr.	€
F40704	1878x300x1000/1265 mm	61	4,1	



Art.No	LxDxH	Kg	Hr.	€
F40705	1197x300x1000 mm	57	3,4	



Art.No	LxDxH	Kg	Hr.	€
F40706	1846x300x1000 mm	69	4,5	



Art.No	LxDxH	Kg	Hr.	€
F40707	1063x470x1000 mm	37	2,2	

# Information

---

- Load heavy low, obvious you think. But you should always remember this, store your load in a clever way and you will have less back problems and the vehicle will act much better and be safer on the road.
- If you have bulky packages on the floor make sure to use proper straps to retain them! It can save your life!!
- Remember that System Edström is only a tool for good order and safety in your vehicle, at the end of the day it is up to you how effective this tool will function in your every day life.
- When you equip your vehicle with the tools and spare parts you'll need, remember to PUT the items in place. If you just throw in place you can damage tools, parts and the interior.
- Use drawer inserts and plastic bins as much as possible, it will keep your stuff in place. It also avoids unnecessary noise and damage to tools/parts.
- Benefit from a quieter life by using plastic foam in the drawers, it also prevents damage to tools and parts.
- Rubber mats in the shelves are a matter of course for us. Again, it reduces noise and your tools and parts stay in place.

---

Now that you have chosen to have System Edström in your vehicle you have taken the first and most important step to make your mobile workshop safe and functional. From here on it is up to you how safe and functional your working place will be.

Remember;

You as the driver has the full responsibility if you or any one else is injured because the cargo is poorly secured. It is also your responsibility to make sure that the interior is mounted in the safest way possible whatever your choice of workshop, even if they are professionals with knowhow and long experience .

Make sure NOT to exceed the maximum payload of the vehicle.

---

## **Security, Environment & Quality**

The company is certified according to SS-EN ISO 9001:2008 to secure the administrative quality and to give us the possibility to keep a high accuracy on deliveries.

Our products are tested in two ways, the first and most important is two crashtests, one (ECE 17:07) performed by Milbrook in England and another one performed by Valutec in France (INRS NS286). German TÜV-GS has tested and approved our products regarding function and durability. Learn more about us on our homepage, [www.edstrom.se](http://www.edstrom.se).

All material used in System Edström can be recycled to 100%. We are certified according to SS-EN ISO 14001:2004.

# Universal

Recommended retail prices valid from 2015-07-01 until further notice. Mounting and VAT is excluded.  
Suggested hours is the recommended mounting time for experienced retailers.



**Extendable interior**



**Basic Kit**



Art.No	LxDxH	Kg	Hr.	€
F11080	1210x700 mm	50	3,6	



Art.No	LxDxH	Kg	Hr.	€
F3278	786x300x890 mm	12	1,9	



Art.No	LxDxH	Kg	Hr.	€
F11082	1210x700 mm	55	3,6	



Art.No	LxDxH	Kg	Hr.	€
F3282	999x300x890 mm	15	1,9	



Art.No	LxDxH	Kg	Hr.	€
F11084	1210x700 mm	48	3,6	



Art.No	LxDxH	Kg	Hr.	€
F3290	999x200x890 mm	11	1,9	

# Universal

Recommended retail prices valid from 2015-07-01 until further notice. Mounting and VAT is excluded.  
Suggested hours is the recommended mounting time for experienced retailers.



**Sliding interior**



**Interior/load carrier**



Art.No	LxDxH	Kg	Hr.	€
F11031	950x350x655 mm	44	3,6	



Art.No	LxDxH	Kg	Hr.	€
F48080	930x1500x570 mm	51	0,8	



Art.No	LxDxH	Kg	Hr.	€
F11033	1300x350x755 mm	58	3,6	



Art.No	LxDxH	Kg	Hr.	€
F48081	930x1500x570 mm	82	1,2	



Art.No	LxDxH	Kg	Hr.	€
F11035	1650x350x590 mm	68	3,6	



Art.No	LxDxH	Kg	Hr.	€
F48082	930x1500x570 mm	82	1,2	

