



## Quartz Halogen Beacons

The Britax quartz halogen range of rotating beacons are classic in design and function providing excellent visibility and long lasting construction. Beacon lenses are all made from impact resistant polycarbonate that also provide remarkable colour intensity. The 12 and 24 volt versions are designed to be interchangeable between different vehicles: simply change the globe and move the drive belt and the beacon is converted. Most beacons also feature belt drive for quiet, reliable operation. Some of the heavy duty models feature gear drive for extra resistance against the elements.

Britax reflectors are vacuum metallised to provide a flawless reflective surface. The reflectors are also computer optimised to create the best possible beam pattern for maximum visibility. Different beacons across the range are available with various mounting including bolt mount, pole mount and magnetic base. All beacons are RFI radio frequency interference suppressed to provide conflict-free operation with multiple electronic devices.

For more information visit [www.britaxbeacons.com.au](http://www.britaxbeacons.com.au).

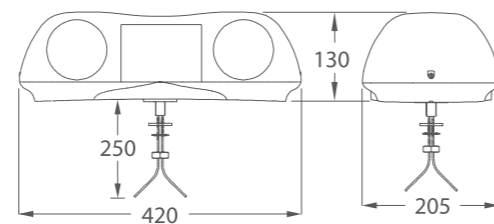


## 420 Twin QH Beacon

Twin Quartz Halogen Rotators with Polycarbonate Lens and ABS Base



- Aerodynamically designed tough polycarbonate lens and black ABS body
- Twin rotator with flat mirror, Globes fitted specific to voltage
- Single or multiple bolt mounting on Bolt base version
- 12V or 24V models, Flash rate nominal 160
- 9.2 Amp draw at 12V, 4.6 Amp draw at 24V
- Bolt base Height 133mm x Depth 205mm x Width 420mm
- Suction Magnetic base Height 170mm x Depth 205mm x Width 460mm

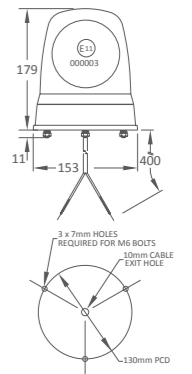


**420-00-12V** Bolt base, amber Lens 420 minibar 12V Globes, **420-00-24V**, 24V Globes  
**424-00-12V** Suc/Mag, amber lens cigarette plug, 3M cord 12V Globes, **424-00-24V**, 24V Globes



## 390 QH Beacon

Quartz Halogen Rotator with Polycarbonate Lens and ABS Base



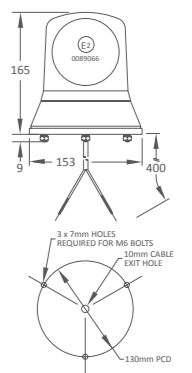
- Tough polycarbonate impact resistant amber lens, Durable black ABS base
- Quiet belt driven reflector rotates around fixed H1 globe (not included)
- Dual voltage motor 12V or 24V, change bulb to suit voltage, RFI suppressed
- 4.6 Amp draw at 12V (based on 55W globe), Flash rate nominal 160

- 390-00** Bolt base, three hole mount, Height 179mm x Ø 153mm
- 392-00** Pole mount, DIN pole suitable, Height 236mm x Ø 149mm
- 394-00** Mag base, 1-3m curly cord, cig plug, Height 182mm x Ø 155mm
- 394-70** Suc/Mag base, 1-3m curly cord, cig plug, Height 186mm x Ø 85mm
- 395-100** Flexi pole mount, DIN pole suitable, Height 223mm x Ø 149mm



## 320 QH Beacon

Quartz Halogen Rotator with Polycarbonate Lens and ABS Base



- Tough polycarbonate impact resistant amber lens, Durable black ABS base
- Quiet belt driven reflector rotates around fixed H1 globe (not included)
- Dual voltage motor 12V or 24V, change bulb to suit voltage, RFI suppressed
- 4.6 Amp draw at 12V (based on 55W globe), Flash rate nominal 160

- 320-00** Bolt base, three hole mount, Height 165mm x Ø 153mm
- 321-00** Bolt base, single hole mount, Height 193mm x Ø 149mm
- 322-00** Pole mount base, DIN pole suitable, Height 223mm x Ø 149mm
- 324-00** Mag base, 1-3m curly cord, cig plug, Height 169mm x Ø 155mm